



GAT MONTHLY MEMBERSHIP PROGRESS REPORT

Results as of: 7/31/2023

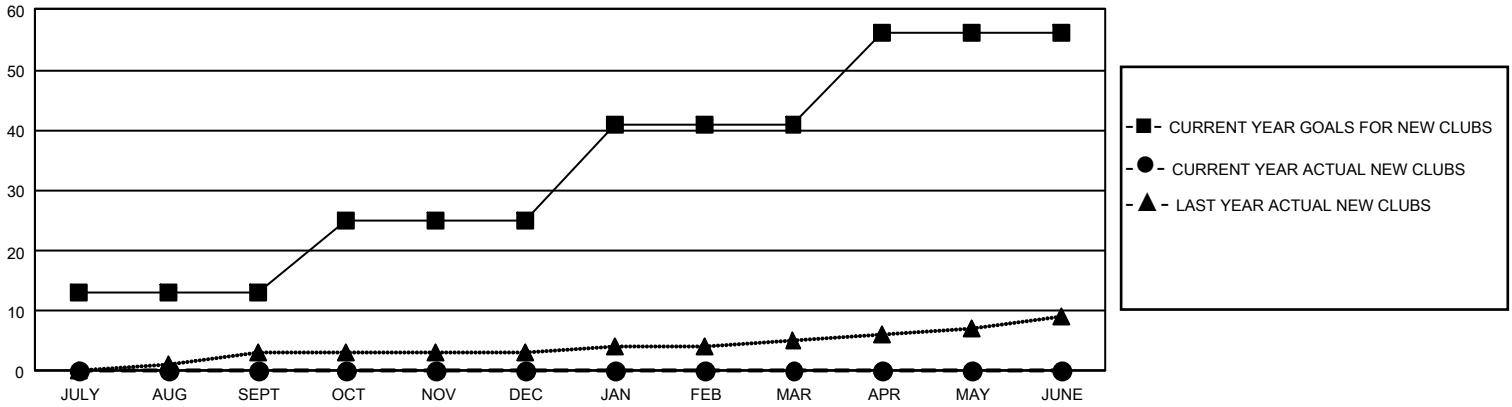
GMT Constitutional Area 1, Group B

REPORT DOES NOT INCLUDE CLUBS IN UNDISTRICTED AREAS.

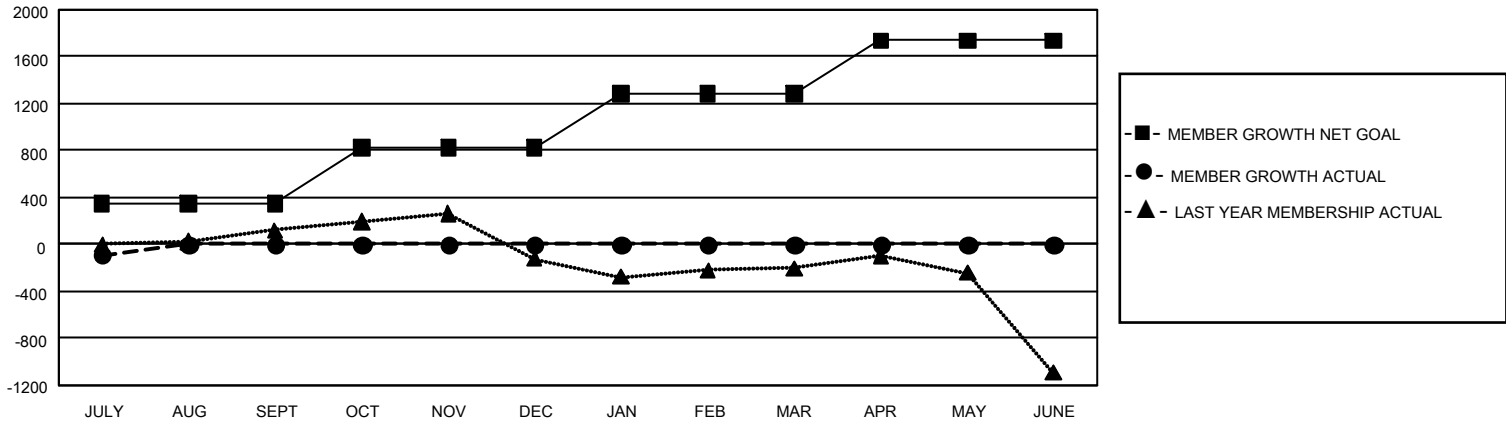
Clubs			
RESULTS FOR 2023-2024			
QUARTER	NEW CLUB GOAL	NEW CLUBS	DROPPED CLUBS
JULY/AUG/SEPT	39	0	4
OCT/NOV/DEC	36	0	0
JAN/FEB/MAR	48	0	0
APR/MAY/JUNE	45	0	0

Members			
RESULTS FOR 2023-2024			
QUARTER	MEMBER GROWTH NET GOAL	MEMBER GROWTH ACTUAL	DROPPED MEMBERS ACTUAL (including transfers)
JULY/AUG/SEPT	345	489	498
OCT/NOV/DEC	482	0	0
JAN/FEB/MAR	460	0	0
APR/MAY/JUNE	452	0	0

GOALS AND ACTUAL NEW CLUBS CUMULATIVE



GOALS AND ACTUAL MEMBERS CUMULATIVE



DROPPED CLUBS: 4	
DROPPED MEMBERS	
DECEASED	36
CLUB CANCELLED	0
OTHER	462
TOTAL	498

162 CLUBS OF 1,014 ADDED 1 OR MORE NEW MEMBERS

[CLICK HERE FOR CUMULATIVE MEMBERSHIP DATA](#)

GENDER DISTRIBUTION	
MALE	15,840 (58.56%)
FEMALE	11,189 (41.36%)
NON BINARY	2 (0.01%)
PREFER NOT TO ANSWER	19 (0.07%)
TOTAL FAMILY UNIT MEMBERS	5,504
FAMILY MEMBERS PAYING HALF DUES	2,900